

# What is CLICS?

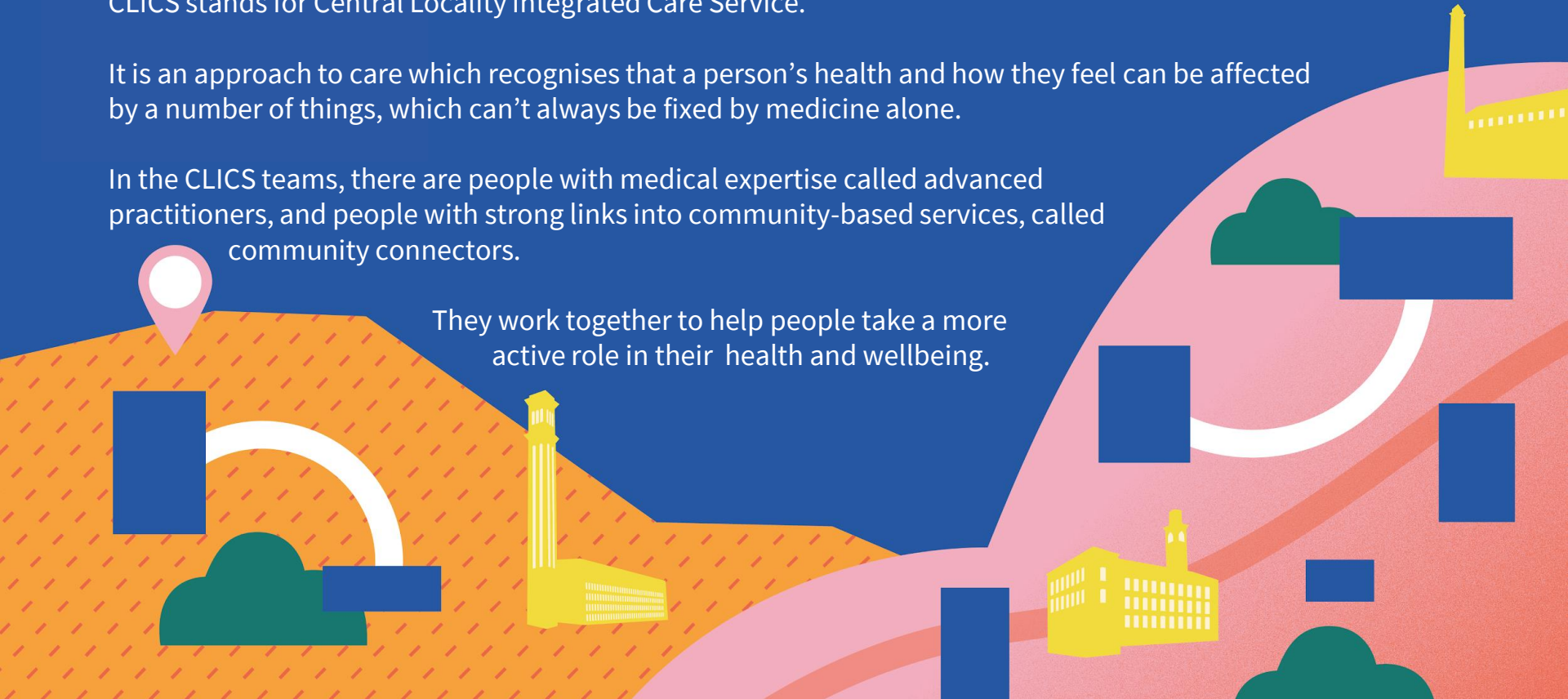


CLICS stands for Central Locality Integrated Care Service.

It is an approach to care which recognises that a person's health and how they feel can be affected by a number of things, which can't always be fixed by medicine alone.

In the CLICS teams, there are people with medical expertise called advanced practitioners, and people with strong links into community-based services, called community connectors.

They work together to help people take a more active role in their health and wellbeing.



# How does CLICS work?

One of the CLICS team members will have an in-depth first appointment with you to go through your needs and work with you, to identify what the best support for you might be.

In that first appointment they will spend up to 45 minutes getting to know you and developing a personalised care plan with you. Your care plan could involve clinical services as well as non-clinical services. They will also agree with you what follow up support might be needed.

Learn more about CLICS by watching this short video on [www.bit.ly/CLICSstory](http://www.bit.ly/CLICSstory)

# I'm interested, what's next?

CLICS is offered to patients who we think could benefit from the service. If you have received this leaflet from your GP practice you are eligible for the service.

If you are interested in the service, or would like to talk to someone about CLICS, please contact your practice.

Your practice will take a few details from you to organise your referral.

